

1710 Afton Road

Sycamore, Illinois



available

Located in Sycamore Prairie Business Park

highlights

- +/- 20,696 SF Total Building
- 10% Office
- 1 Acre Lot
- 20' Clear Ceiling Height
- 1 Interior Dock
- 1 DID
- 21 Car Parking
- Fully Sprinklered

Bruce Granger

847.655.8441

bruce.granger@grubb-ellis.com

For more information visit:

www.brucegranger.com

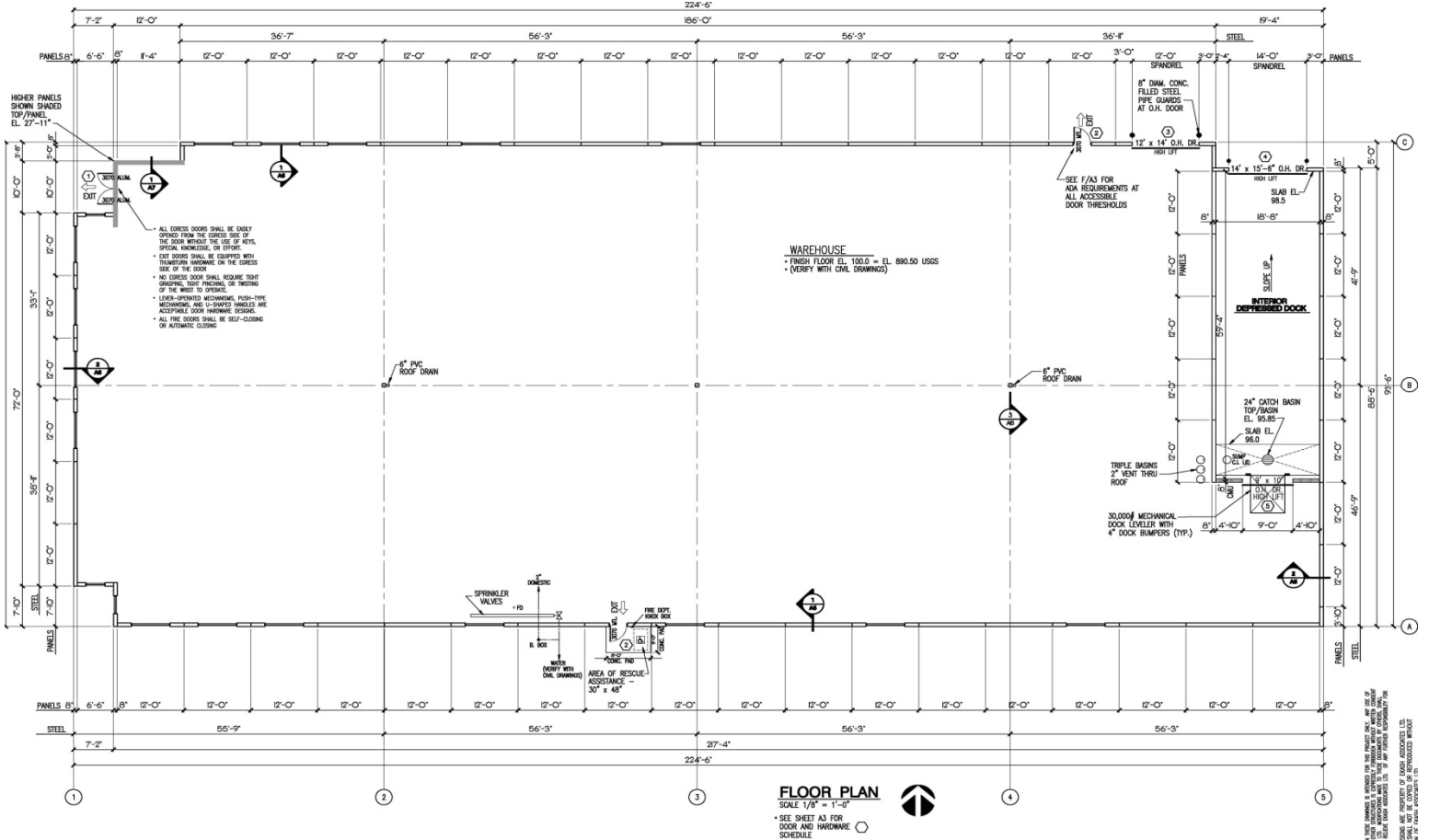


GRUBB & ELLIS
From Insight to Results

1710 Afton Road

Sycamore, Illinois

Floor Plan



Bruce Granger
 847.655.8441
 bruce.granger@grubb-ellis.com



9550 W Higgins Road Suite 1050
 Rosemont, Illinois 60018
 847.390.8040 tel
 847.823.1466 fax



The information contained herein was obtained from third parties, and it has not been independently verified by the real estate brokers. Buyer/tenants should have the experts of their choice inspect the property and verify all information. Real estate brokers are to qualified to act as or select experts with respect to legal, tax, environment, building construction, soils-drainage or other